



EST

2022

SIGNATURE MANSIONS

EXQUISITE LIVING

FLOOR PLANS



SIGNATURE
DEVELOPERS



THE MAGNOLIA COLLECTION

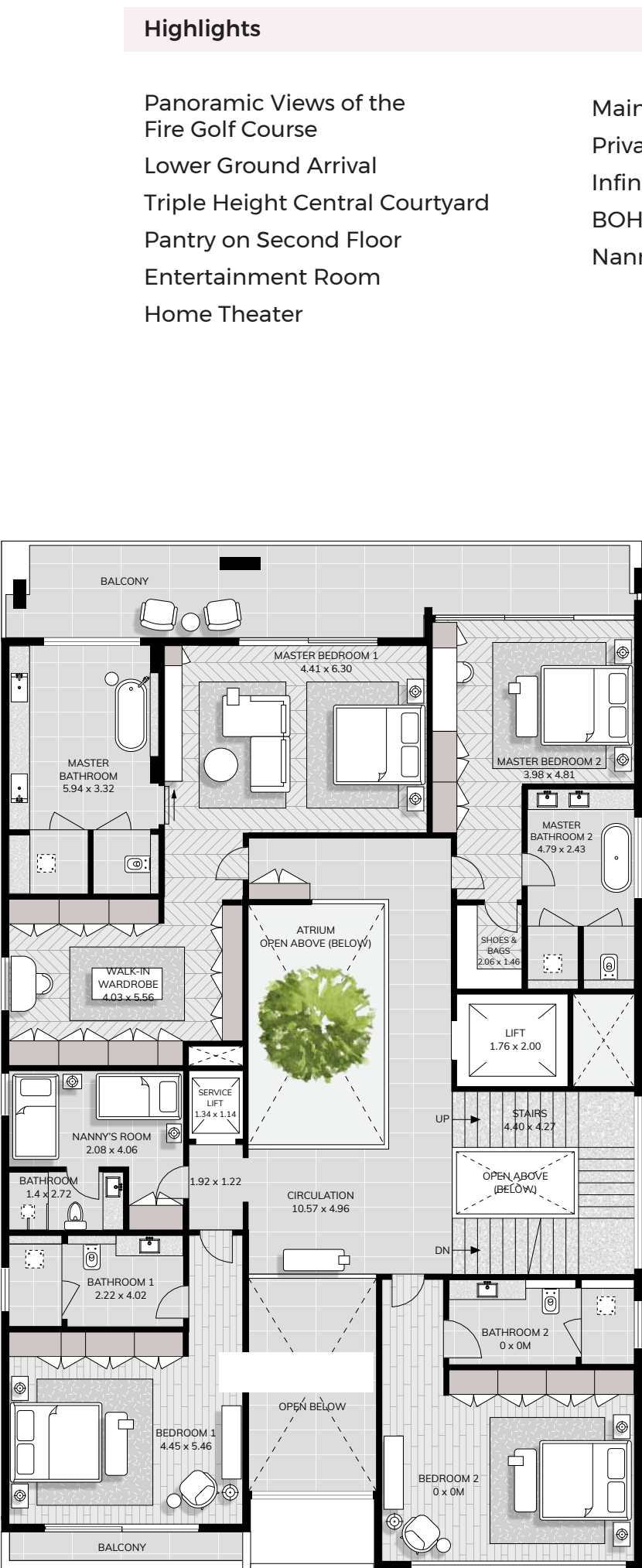
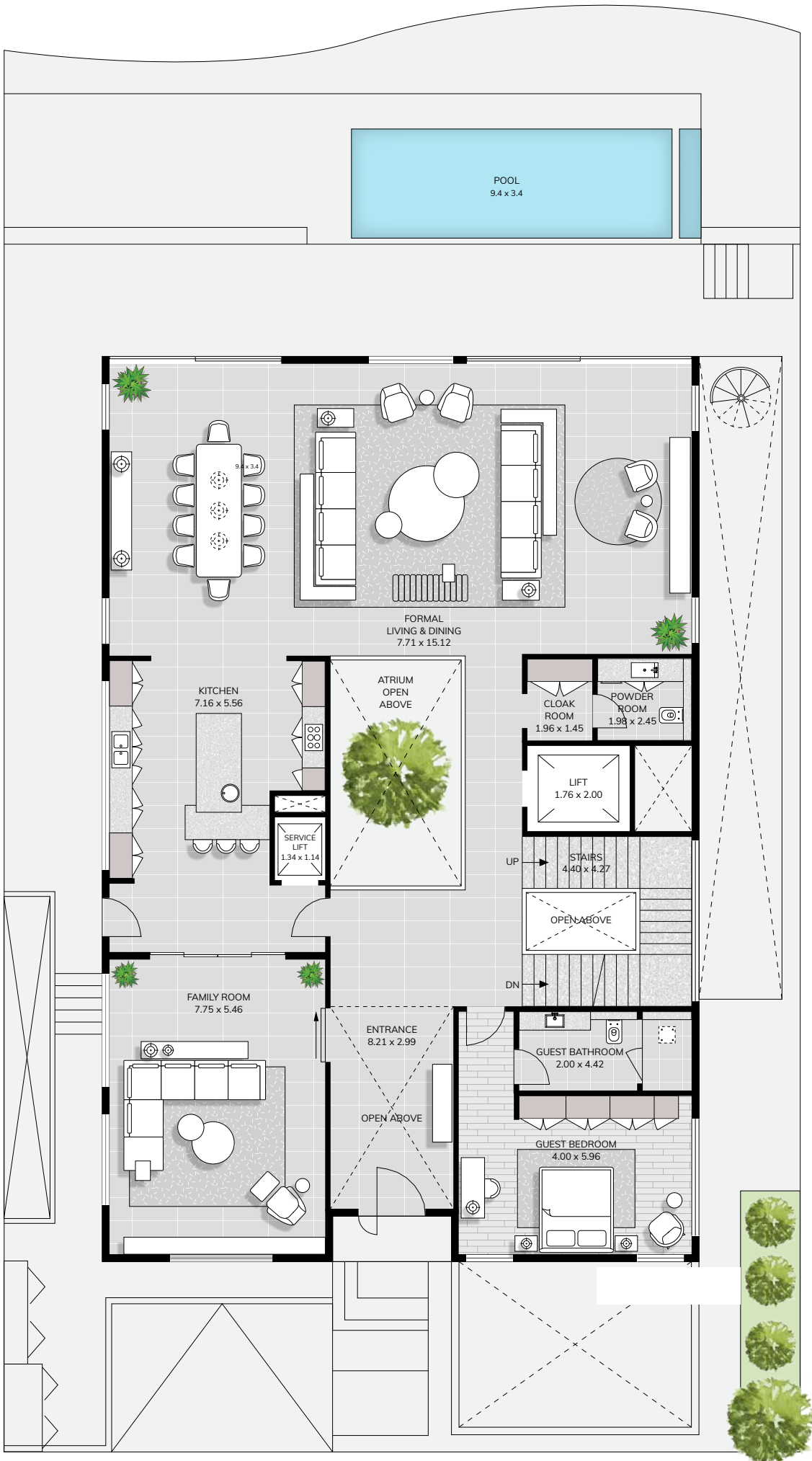
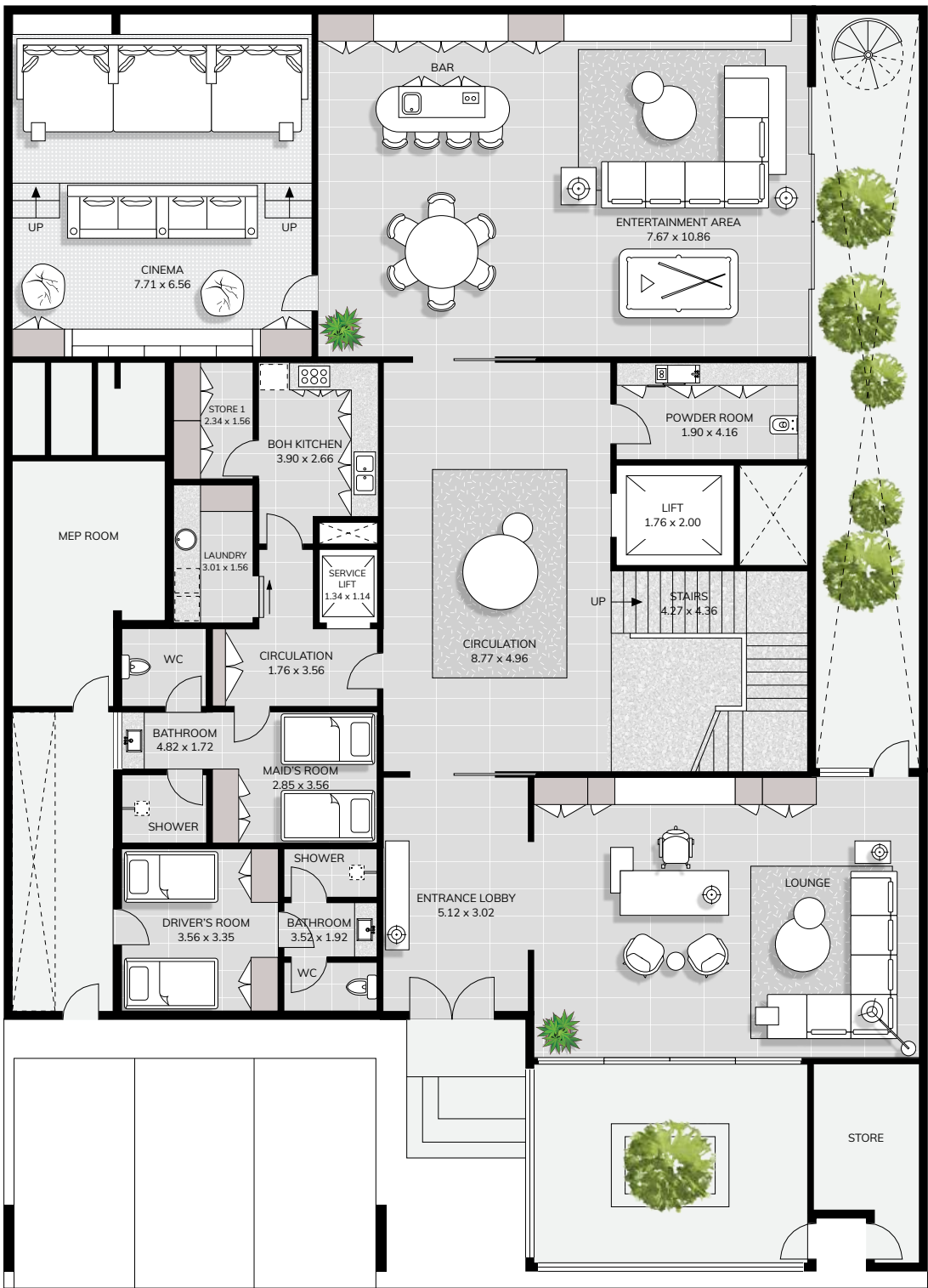
From every perspective this villa is an individually eye-catching residence creating a home for every member of your family to enjoy. With unmatched panoramic views of the 400m wide golf course, you access your very own horizon vistas from sunrise to sunset.



6 BEDROOM

Villa Type 1 THE MAGNOLIA COLLECTION
Floors LG + G + 2

Total Area 1,433.81 Sq.m | 15,433.40 Sq.ft



Highlights

- Panoramic Views of the Fire Golf Course
- Lower Ground Arrival
- Triple Height Central Courtyard
- Pantry on Second Floor
- Entertainment Room
- Home Theater

Key Plan

- Main + Service Elevators
- Private Terrace Pool
- Infinity Ground Pool
- BOH Kitchen
- Nanny, Maid, Driver Rooms



DISCLAIMER

Any images and visualizations contained herein are provided for illustrative and marketing purposes only. All information contained herein is subject to change without notice and without liability and only the information contained in the final Sales and Purchase Agreement entered into between the Seller and Buyer will have any legal effect. E&OE.

Project Sales and Marketing by:

THE JASMINE COLLECTION

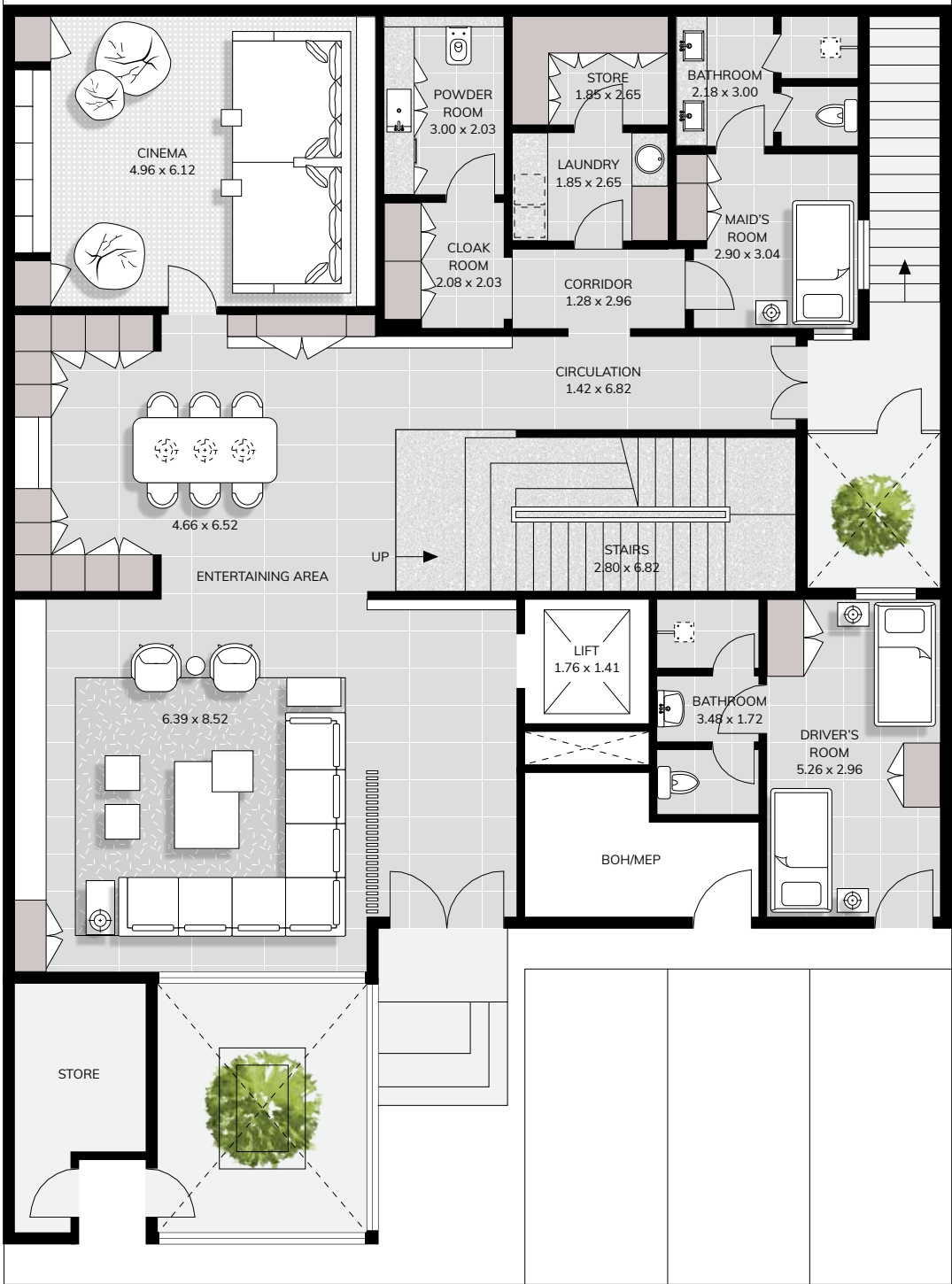
Offering scenic view of the Golf course & the Clubhouse and vibrant contemporary design, The Jasmine Collection residences were designed with couples and young families in mind. The open-plan living arrangement provides flexible spaces to relax, entertain, work and play.



5 BEDROOM

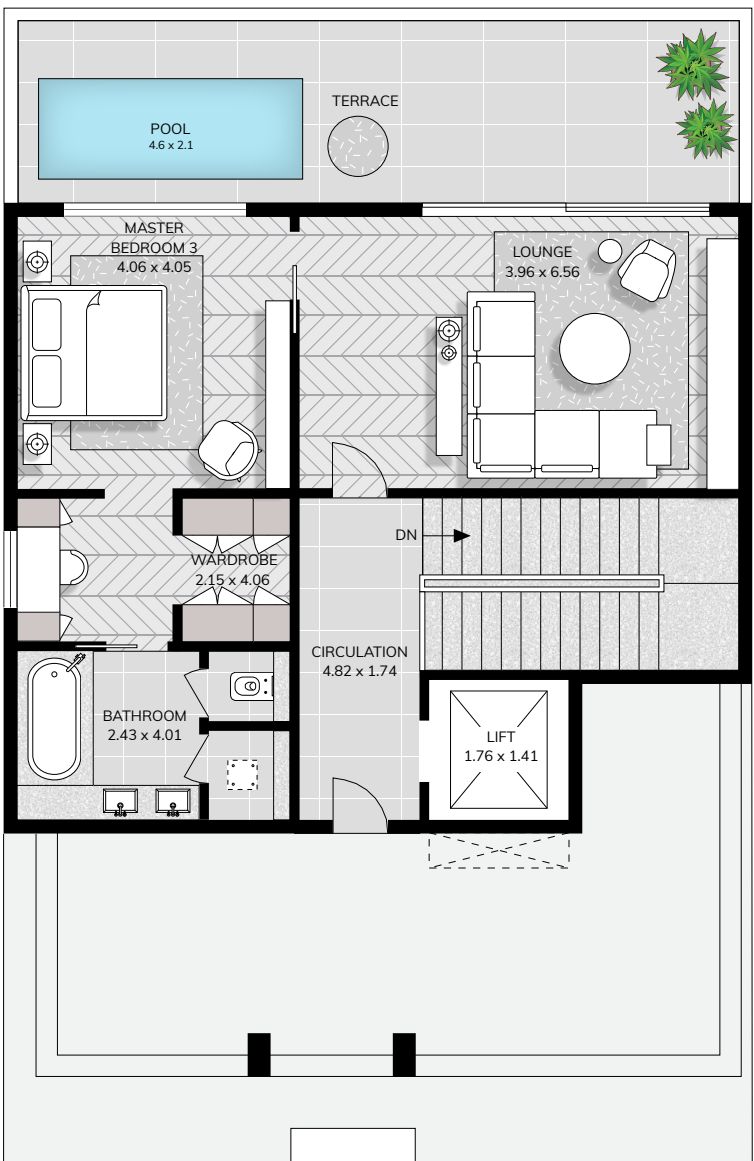
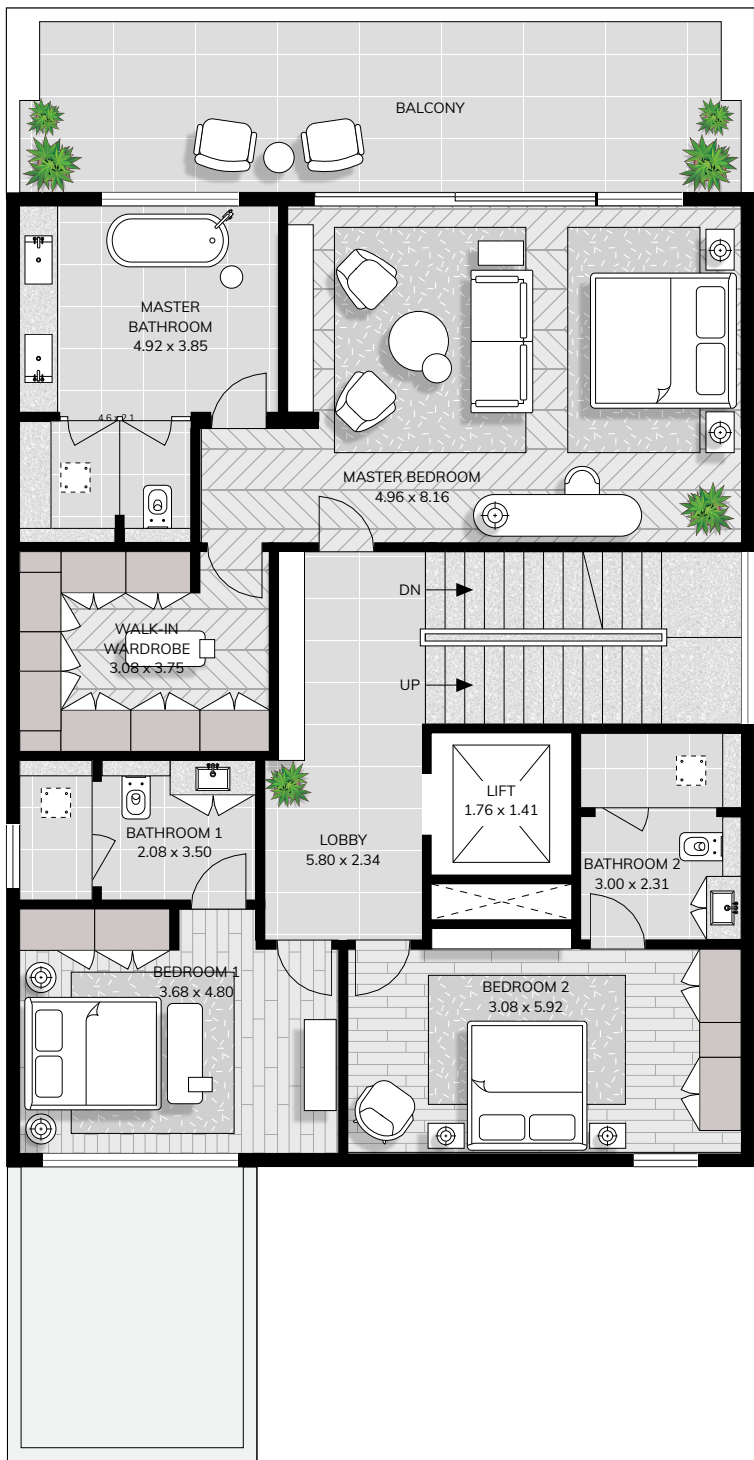
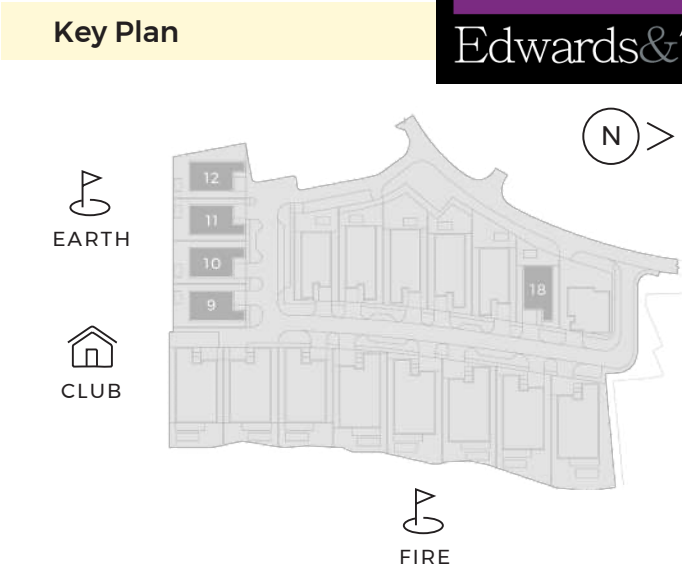
Villa Type 2 THE JASMINE COLLECTION
Floors LG + G + 2

Total Area 825.87 Sq.m | 8,889.59 Sq.ft



- Highlights
- Scenic View of the Earth
Golf Course & Clubhouse
Lower Ground Arrival
Sunken Courtyard
Entertainment Room
Home Theater

Main + Service Elevators
Private Terrace Pool
Infinity Ground Pool
BOH Kitchen
Maid & Driver Rooms



THE ORCHID COLLECTION

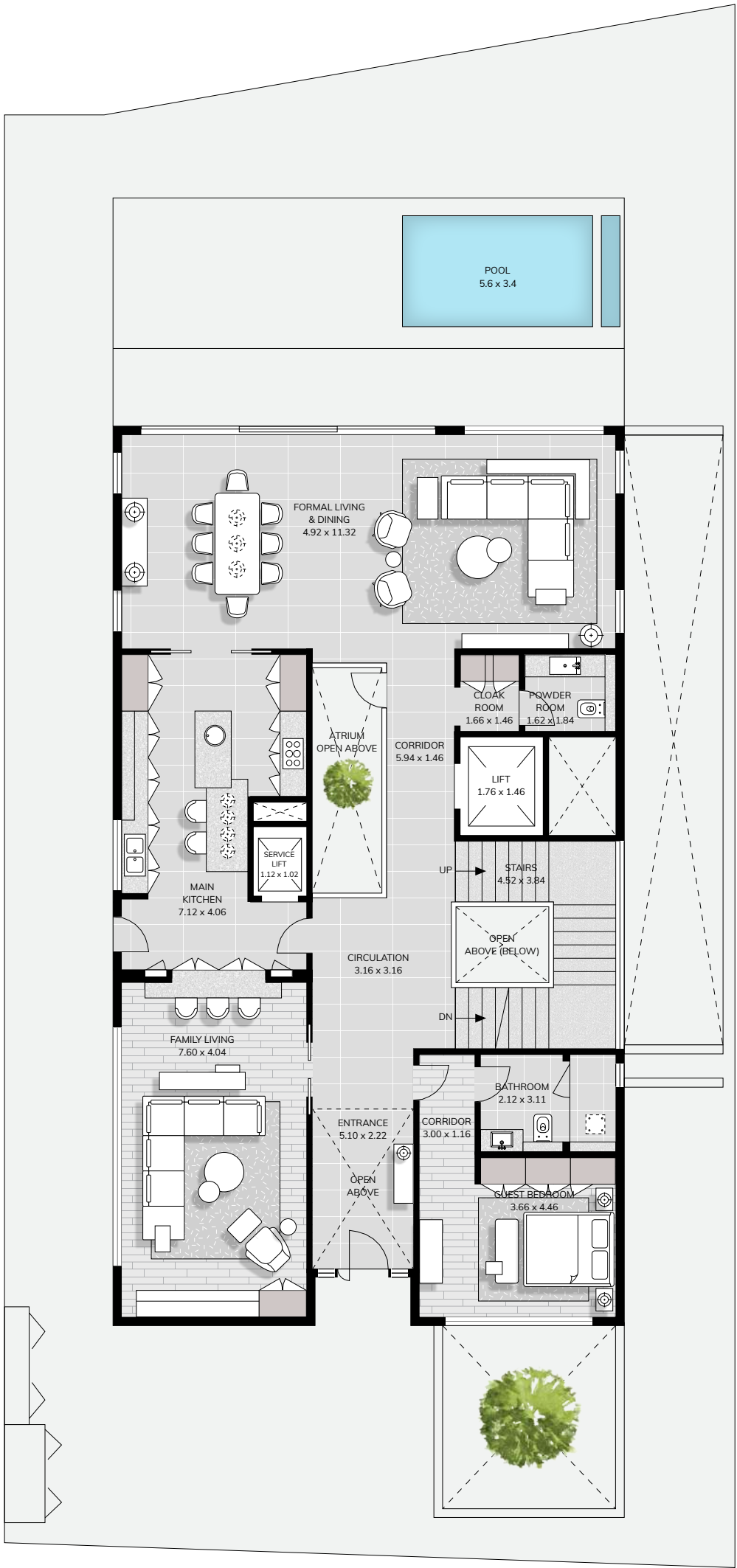
The six en-suite bedroom villas in The Orchid Collection have panoramic views of the city skyline and the marina, offering magical urban vistas from multiple parts of the residence.



6 BEDROOM

Villa Type 3 THE ORCHID COLLECTION A
Floors LG + G + 2

Total Area 1,102.45 Sq.m | 11,866.67 Sq.ft



- Highlights
- Panoramic Views of the Earth Golf Course

Lower Ground Arrival

Triple Height Central Atrium

Pantry on Second Floor

Entertainment Room

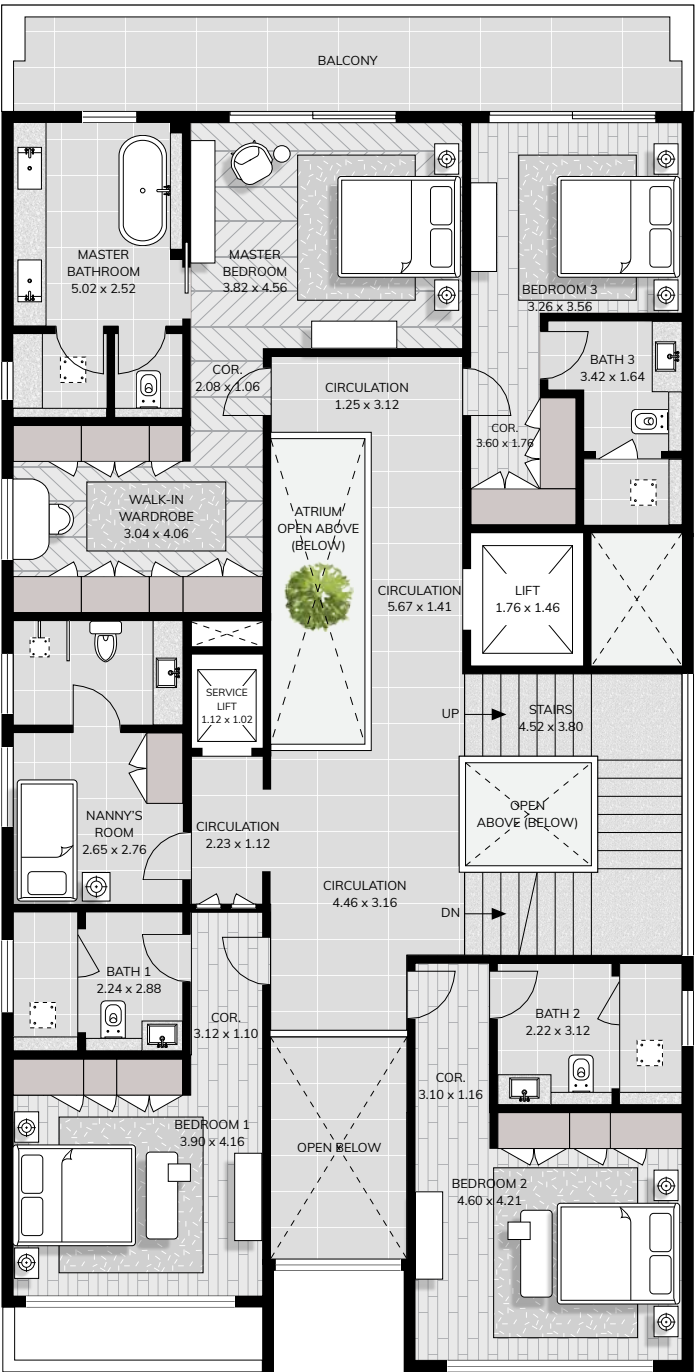
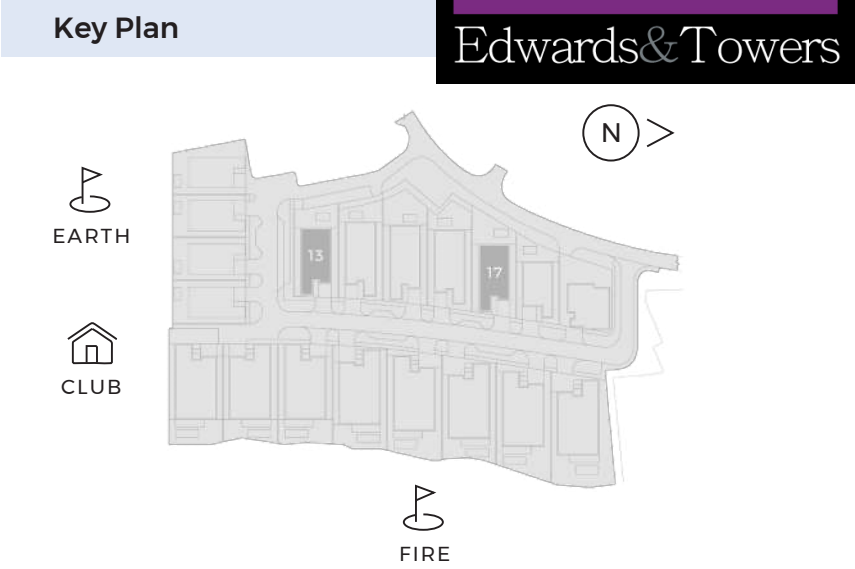
Home Theater
- Main + Service Elevators

Private Terrace Pool

Infinity Ground Pool

BOH Kitchen

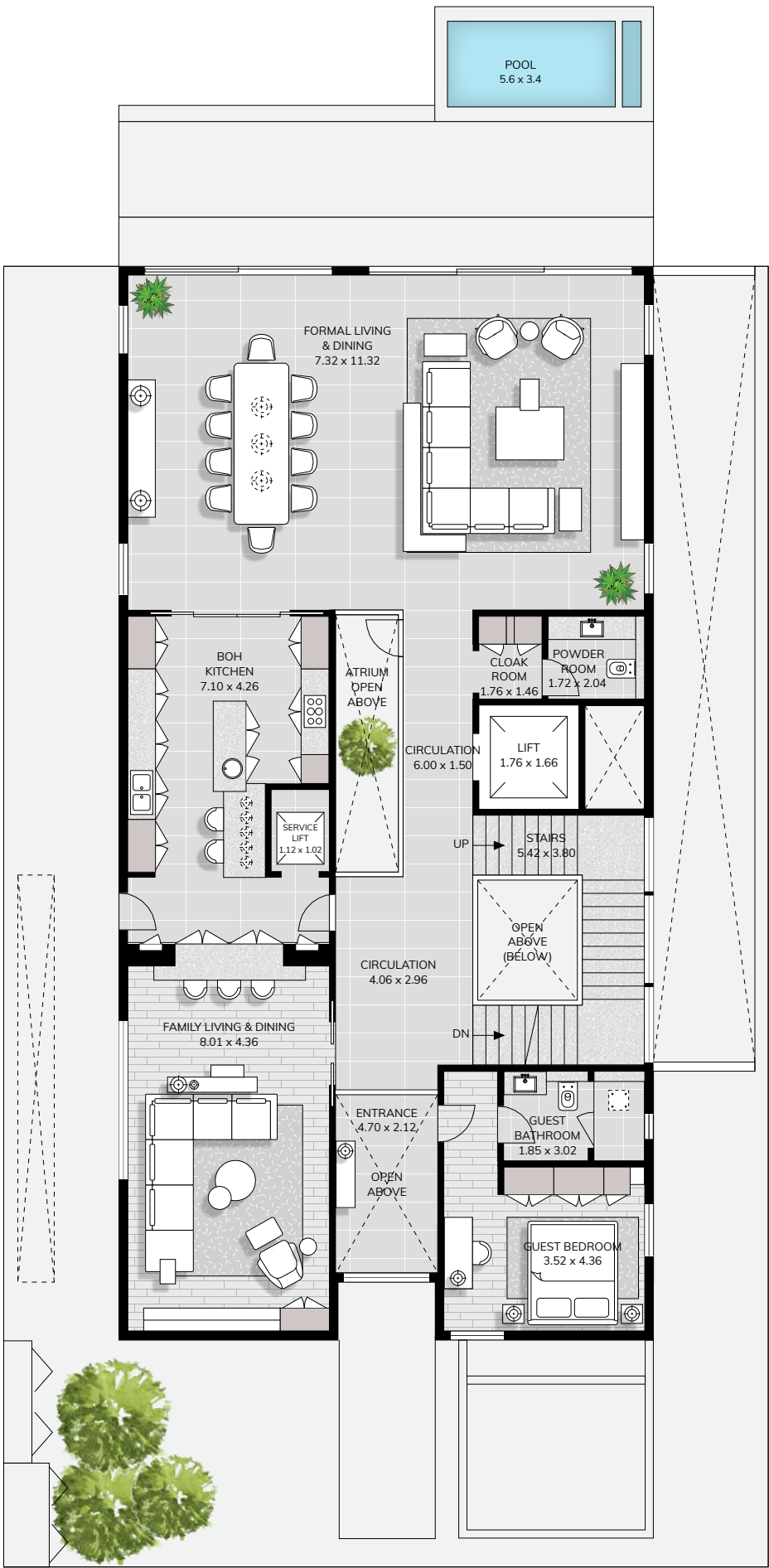
Nanny, Maid, Driver Rooms



6 BEDROOM

Villa Type 4 THE ORCHID COLLECTION B
Floors LG + G + 2

Total Area 1,148.17 Sq.m | 12,358.79 Sq.ft



- Highlights
- Panoramic Views of the Earth Golf Course

Lower Ground Arrival

Triple Height Central Atrium

Pantry on Second Floor

Entertainment Room

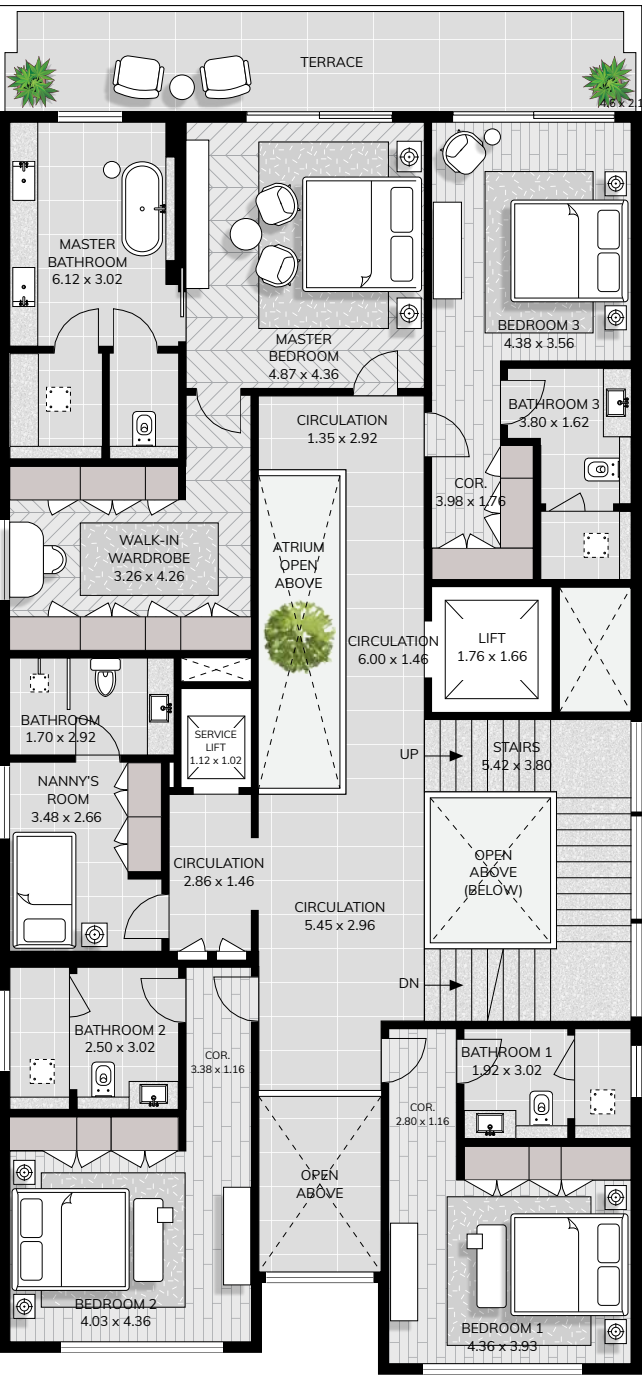
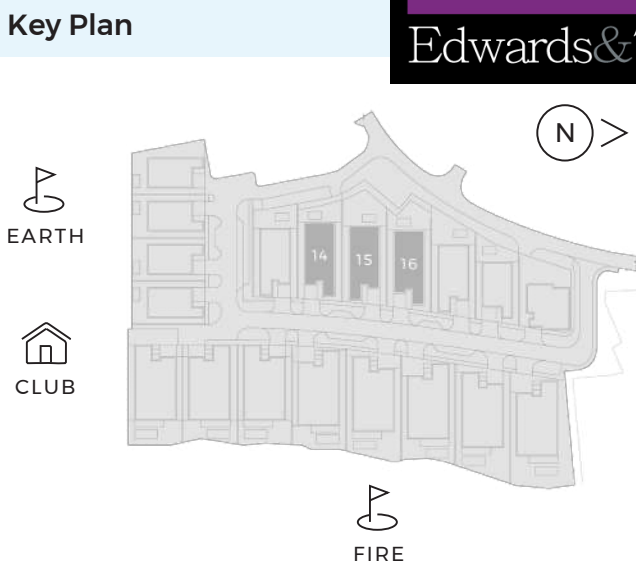
Home Theater
- Main + Service Elevators

Private Terrace Pool

Infinity Ground Pool

BOH Kitchen

Nanny, Maid, Driver Rooms







EST

2022

SIGNATURE MANSIONS

EXQUISITE LIVING



SIGNATURE
DEVELOPERS

www.signaturemansions.com